

ROAD INDEX

Where is Geauga?
Close to so Much!

USE DATE

2200 THOMPSON
 3100 HARDEN
 3100 MONTVILLE
 2100 HUNTSBURG
 6000 MIDDLEFIELD
 3000 PARKMAN
 8100 CHARDON
 5270 MUNSON
 2180 CLARIDON
 4000 BURTON
 1700 TROY
 1100 CHESTER
 5950 RUSSELL
 5920 NEWBURY
 2170 AUBURN
 810 BAINBRIDGE



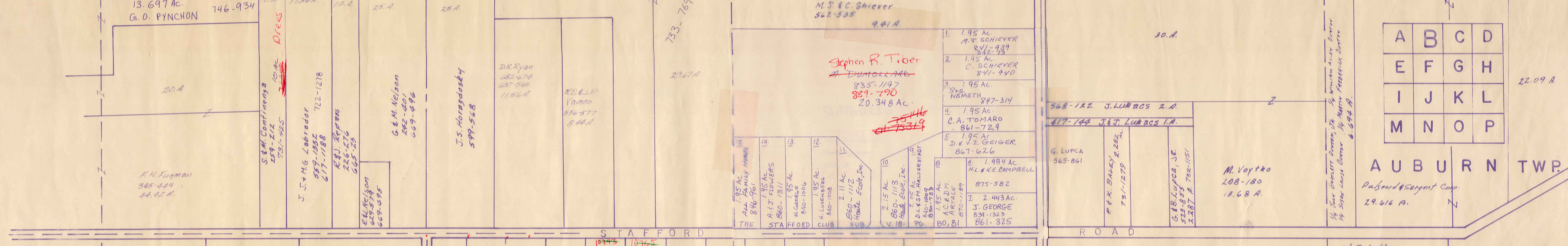
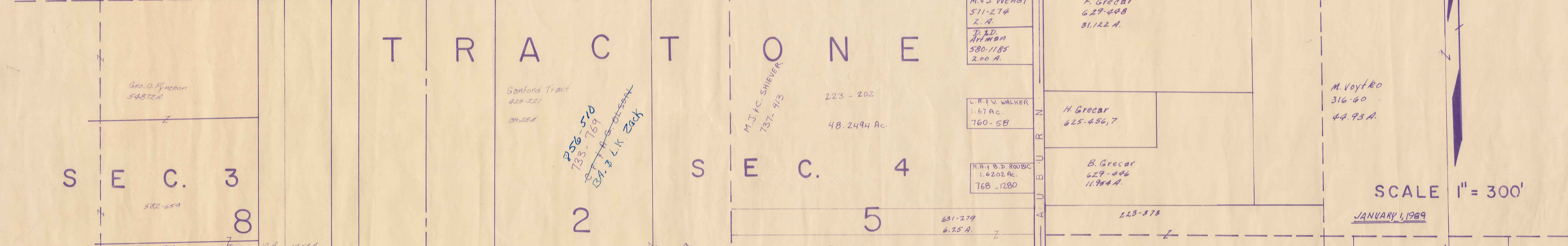
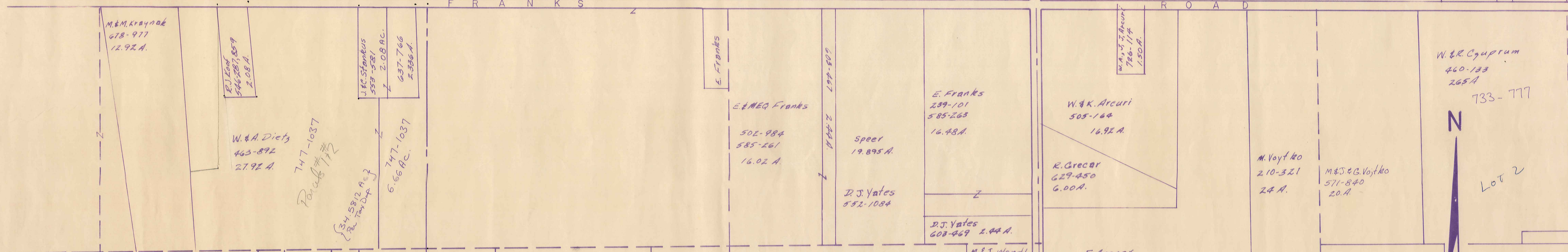
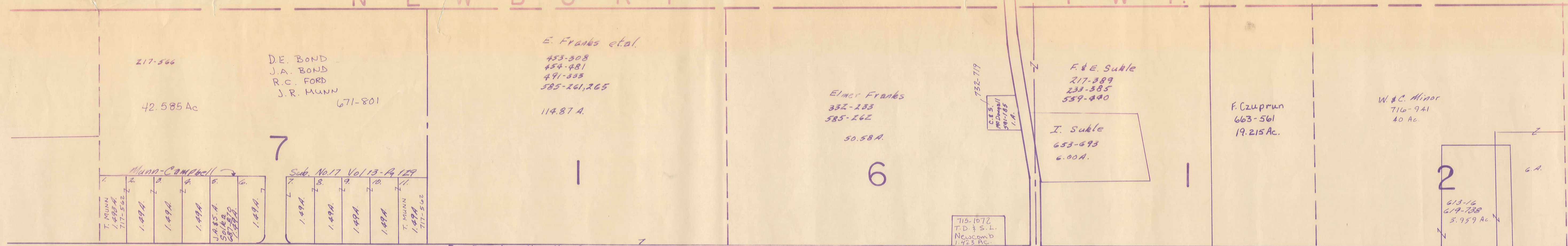
1	AUBURN ROAD KARRY LAKES DRIVE	C1-C7 A3	J JACKSON DRIVE JACOBS DRIVE (PVT)	A6 F2	S SHADOW WOOD SHAW ROAD SIGNAL HILL (PVT) SNOW ROAD SOUTH BLVD. STAFFORD ROAD SUNSET DRIVE
2	B BAINBRIDGE ROAD BARTHOLOMEW RD. BIRDIE LANE (PVT) BRIDGE CREEK TR. BROADWAY DRIVE BROOKFIELD DRIVE	A4 A6-06 A3 C4 A6 A7	K KASIK DRIVE	A6	T TAYLOR MAY RD. THORPE ROAD TIMBER LN. TWIN CREEKS (PVT)
3	C CARRIAGE HILL CHIPPING LANE (PVT) CLEVELAND DRIVE CPA/KEL ROAD CREEKSIDE DRIVE CREIGHTON DRIVE CURRY LANE	D3 A3 A6 A7-E7 A4 C3 C3	L LAKE DRIVE LONGVIEW TRAIL LUCKY BELL LANE	A6 C4 A1	U
4	D EAGLES POINTE (PVT) EDWARD LANE	A3 A7	M MEADOW LANE MESSENGER ROAD MT PLEASANT DRIVE MUNN ROAD	C3 E1-D4 A6 B1-B7	V VALLEY ROAD (F1-EH)
5	E FAIRWAY VIEW (PVT) FAY ROAD FRANKS ROAD	A3 F6-F B1-D1	N NORTH BLYD.	A6	W WASHINGTON ST. WHISPER WOOD CIRCLE WING ROAD WINGATE DRIVE WOOD ACRE TRAIL
6	F HEATHER HILL (PVT)	A3	O OVERLOOK BROOK CTEYD OVERLOOK BROOK DRIVE	A3 A3	X
7	G INDIAN HILLS DR.	A4	P POINTE BREEZE (PVT)	A3	Y
	H QUINN ROAD	A5-A6	Q QUINN ROAD	A5-A6	Z
	I RAVENNA ROAD RIVERWOOD LANE	E1-E7 A1	R RAVENNA ROAD RIVERWOOD LANE	E1-E7 A1	

① AUBURN ELEM. SCHOOL ④ AUBURN VOL. FIRE DEPT.
 ② AUBURN COMMUNITY CHURCH ⑤ STATE HIGHWAY GARAGE (SUB-STATION)
 ③ AUBURN TOWN HALL

AUBURN TOWNSHIP

SCALE: 1" = 2000'
CERT. L. PHILLIPS
GEAUGA COUNTY ENGINEER

--- UNPAVED ROAD --- TOWNSHIP LINE
 --- PAVED ROAD --- COUNTY LINE



T R A C T O N E

S E C. 3

S E C. 4

9

4

11

12



SCALE 1" = 300'

JANUARY 1, 1989

A	B	C	D
E	F	G	H
I	J	K	L
M	N	O	P

AUBURN TWP

Pub. & Sargent Corp. 29.616 A.

* INADEQUATE DESCRIPTION

RELATIVE REPRESENTATION

State of Ohio

STATE OF OHIO Match Line

E. Franks et al.
453-308
454-481
491-335
585-261, 265
114.87 A.

Elmer Franks
332-233
585-262
50.58 A.

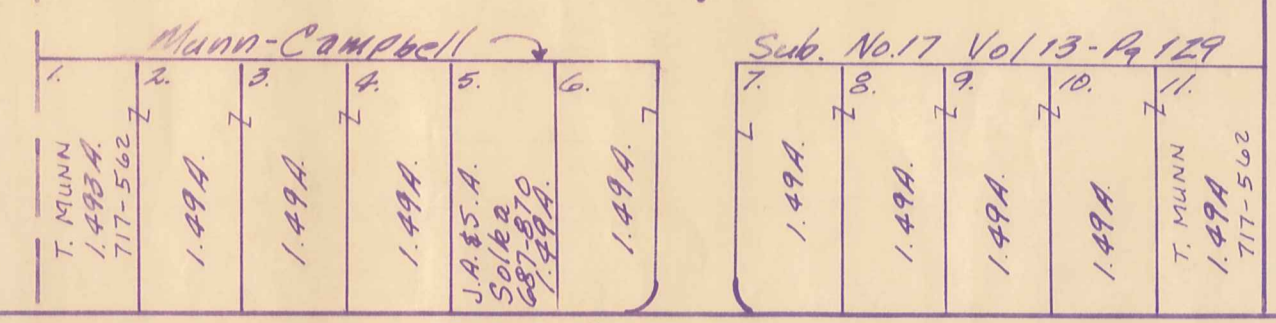
F. & E. Suble
217-389
233-385
559-440
I. Suble
653-673
6.00 A.

F. Czuprun
663-561
19.215 A.

W. & C. Minor
716-941
40 A.

217-566
42.585 Ac

DE. BOND
J.A. BOND
R.C. FORD
J.R. MUNN
671-801



M. & M. Kraynak
618-917
12.92 A.

E.J. Kopf
546-287, 859
2.08 A.

J. & C. Stanokus
553-521
2.08 AC.
637-766
2.386 A.

W. & A. Dietz
463-892
27.92 A.

747-1037
Parcel # 717

747-1037
6.66 AC.

E. & M. E. Franks
502-984
585-261
16.02 A.

Speer
19.895 A.

D.J. Yates
552-1084

E. Franks
239-101
585-263
16.48 A.

D.J. Yates
608-469 2.44 A.

W. & K. Arcuri
505-164
16.92 A.

R. Greear
629-450
6.00 A.

M. Voytko
2.10-321
2.4 A.

M. & J. G. Voytko
571-840
20 A.

W. & R. Czuprun
400-133
265 A
733-777

Lot 2

G.O. Pynchon
54872 A.

Sanford Tract
425-221
39.28 A.

223-202
48.249 A.

M. & J. Wendt
571-274
2 A.
D. & D. Atman
580-1185
2.00 A.

L.R. & V. Walker
1.67 Ac.
760-58

R.A. & B.D. Roubic
1.6202 Ac.
768-1280

F. Greear
629-448
31.122 A.

H. Greear
625-456, 7

M. Voytko
316-60
44.93 A.

13.697 Ac.
G.O. PYNCHON
746-934

S. & M. Continenza
10 A.
159-212
731-245
Dress

J. J. & H. G. Labrador
559-032
617-1188
722-1218

(B) Popovics
234-576
615-23

G. & M. Nelson
295-496
667-496

J.S. Horagosecky
599-548

D.R. Ryan
282-574
637-580
11.56 A.

R.D. & J.P. Varcoe
354-577
8.44 A.

M.J. & C. Shiever
562-535
9.41 A.

Stephen R. Tiber
A. DUMOLLARD
835-1197
829-790
20.348 AC.
75319

1. 1.95 Ac. M. F. SCHIEVER 841-439 642-93
2. 1.95 Ac. C. SCHIEVER 841-440
3. 1.95 Ac. S. NEMETH 847-314
4. 1.95 Ac. C.A. TOMARO 861-729
5. 1.95 Ac. D. & V. GEIGER 867-626

568-122 J. LUPACS 2 A.
617-144 J. J. LUPACS 1 A.

G. LUPCA
565-861

F. & K. BALEY
731-1229

G. & B. LUPCA, JR.
523-805
2.287 A. 722-1151

M. Voytko
208-180
13.68 A.

1/4 Tom Conner, Dwyer, Jr. 1/4 William A. Dwyer
1/4 John Conner, Dwyer, Jr. 1/4 William A. Dwyer
1/4 John Conner, Dwyer, Jr. 1/4 William A. Dwyer
1/4 John Conner, Dwyer, Jr. 1/4 William A. Dwyer

T. & G. Kral
470-420
40 A.

R. & T. Vargo
492-66
20 A.

R. Baines
234-162
546-1307
57 A.

Jo Ann Koniar
607-919
518 A.

J. & J. Roberts
672-1214
684-470
J. J.

Donna H. & Jeanne A. Weisman
587-557
50000 A.

James G. & Sharon L. Boyner
582-742
50000 A.

E. & M. Wodecki
580-844
5.00 A.

D. & S. MENESEE
770-1089
5.00 A.

J. I. Roberts
591-908
500 A.

E. & R. Vargo
591-906
5.00 A.

Registration Lot
Auburn Meadows Home
Owners Assoc. 601-1001
10 A.

Ober
574-485
17.603 A.

R. & J. Giles
637-424

266-433
97.50 A.

V. & F. Lotter
281-173
5 A.
734-671

291-59
41.77 A.

R. M. Thomas
518-580
3 A.

54. 3025 A.

53. 4369 A.

28. E. & S. Pollak
2.9. 613-934

27. 2.745 A.
L. J. C. A. RATCLIFF
770-308

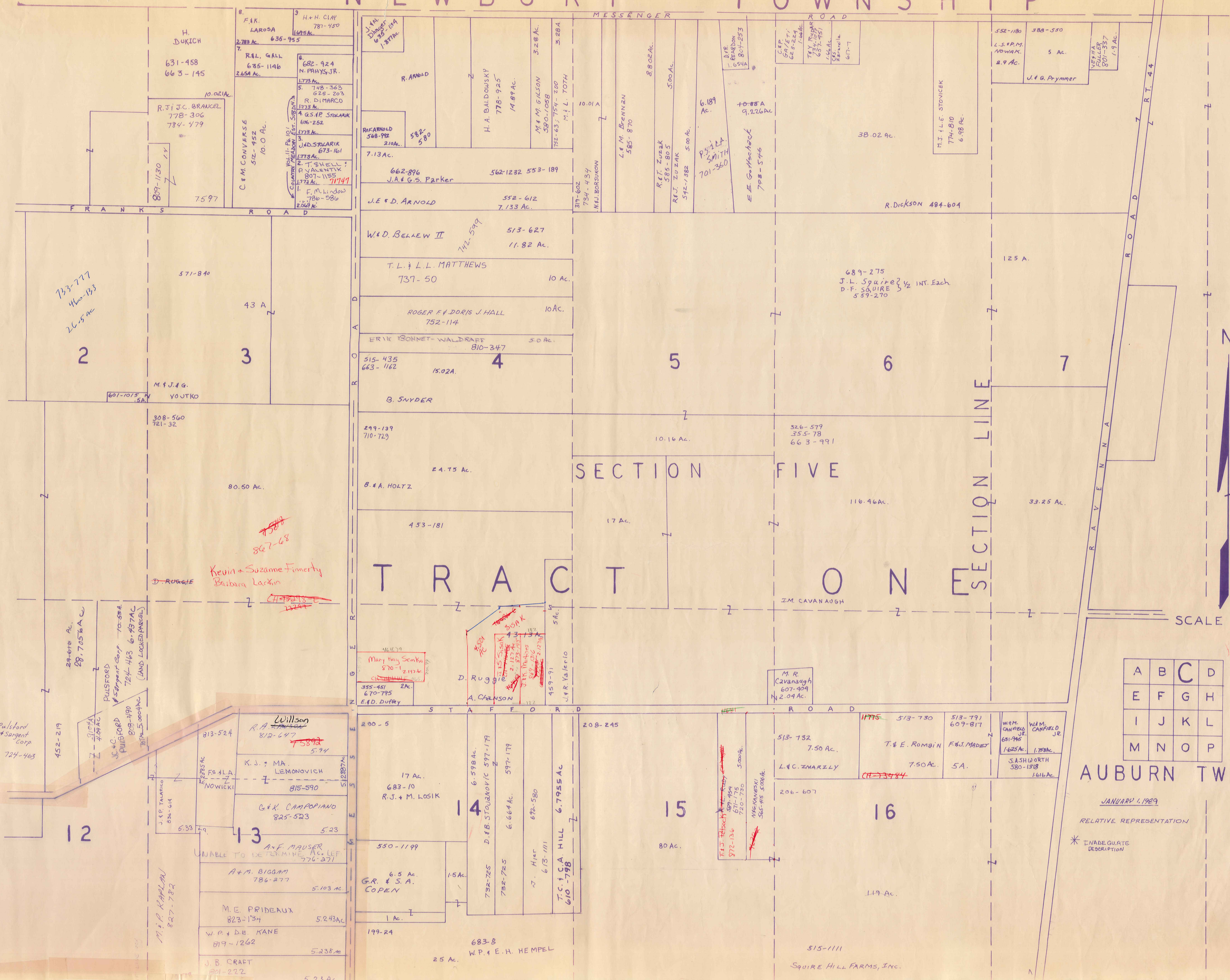
26. 3.563 A.

6.123 A.

A. PRESCOTT
K. GRONOWSKI
5.00 A. 780-725

Match Line

NEWBURY TOWNSHIP



A	B	C	D
E	F	G	H
I	J	K	L
M	N	O	P

AUBURN TWP.

JANUARY 1, 1989

RELATIVE REPRESENTATION

* INADEQUATE DESCRIPTION

Pulsford + Sargent Corp
724-463

452-219

29-670 Ac.
28,7056 Ac

PULSFORD + SARGENT CORP
724-463
6-257AC
(LAND LOCKED PARCEL)

808-190
70-854
10-5000AC

J.P. TALARGO
836-614

M.P. KAPLAN
827-782

~~75812~~
567-68

Kevin + Suzanne Finerty
Barbara Larkin

D. RUGGIE

~~CHARTERED~~
1224

464-79

Mary Kay Semko
870-1 2-172K

D. RUGGIE

A. CARLSON

459-91

J.R. Valerio

589-494
872-136
671-775
120-730

M. R. Cavanaugh
607-909
2.04 Ac.

M. R. Cavanaugh
607-909
2.04 Ac.

513-732
7.50 Ac.

L.C. ZMARZLY

513-730
513-791
609-817

T. E. ROMAIN
F. J. MADEY

W.M. CANFIELD JR.
681-946
1.625 Ac.

W.M. CANFIELD JR.
1.788 Ac.

J. ASHWORTH
580-1918
1.616 Ac.

813-524

Willson
812-647
5.94

K.J. + MA.
LEMONOVICH
815-590

G. K. CAMPOPIANO
825-523

A. F. MAUSER
UNABLE TO DETERMINE AC. LEFT
776-271

A. + M. BIGGAN
786-277
5.103 Ac.

M. E. PRIDEAUX
823-134
5.243 Ac.

W. P. + D. E. KANE
819-1262
5.238 Ac.

J. B. CRAFT
801-222
5.23 Ac.

200-5

17 Ac.
683-10
R. J. + M. LOSIK

6-598 Ac.
6-598 Ac.
D. B. STOJANOVIC 597-171

597-179
6-664 Ac.

678-580
7. A/c
613-1111

T. C. + C. A. HILL
6.7955 Ac
610-788

550-1199

6.5 Ac.
G. R. + S. A.
COPEY

199-24
25 Ac.
683-8
W. P. + E. H. HEMPEL

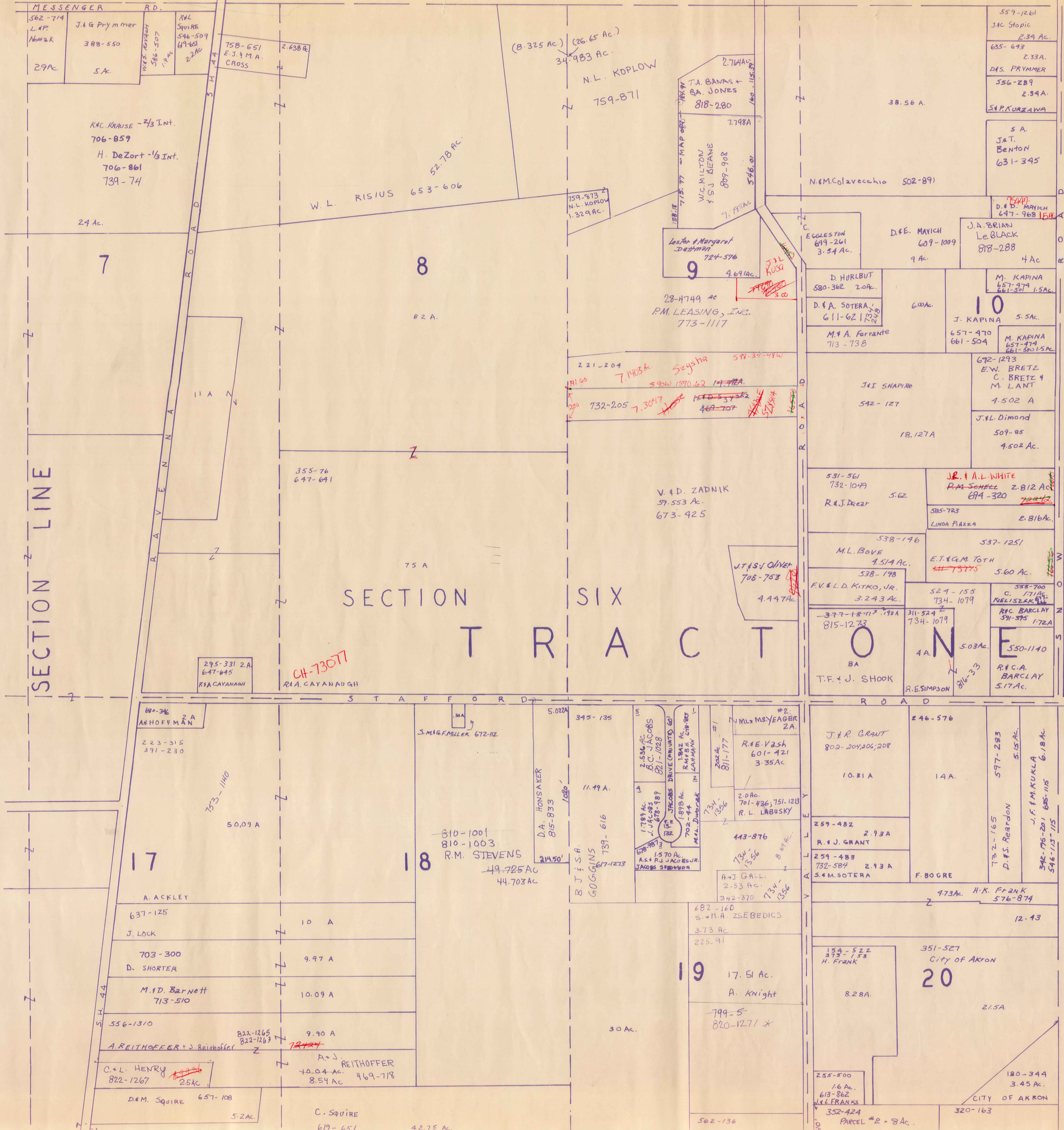
208-245

80 Ac.

515-1111
SQUIRE HILL FARMS, INC.

206-607

119 Ac.



T R O W N S H I P
T R O Y T O W N S H I P



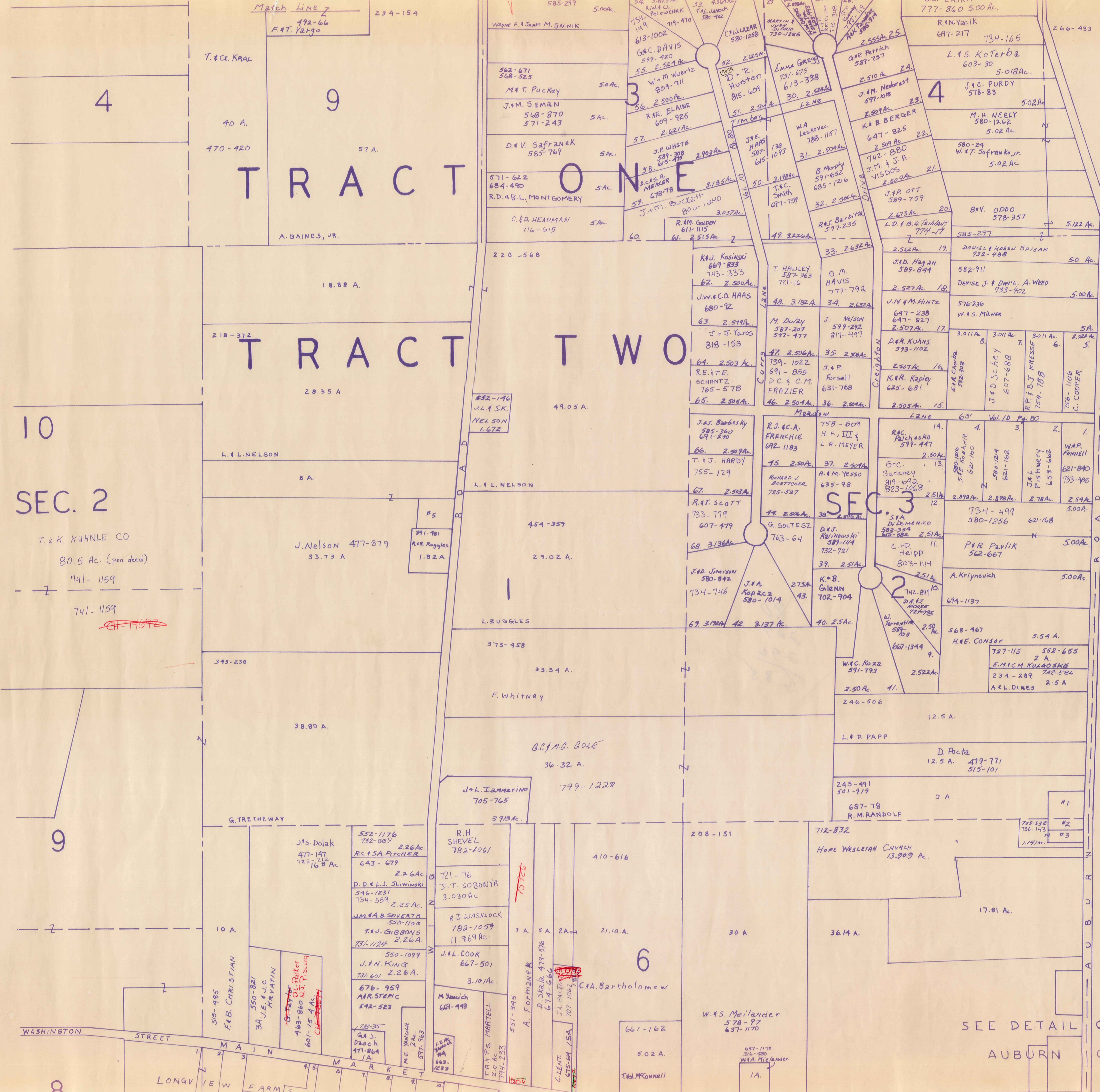
SCALE 1" = 300'

JANUARY 1, 1989
RELATIVE REPRESENTATION

A	B	C	D
E	F	G	H
I	J	K	L
M	N	O	P

AUBURN TWP.

* INADEQUATE DESCRIPTION



TRACT ONE

TRACT TWO

SEC. 2

SCALE 1" = 300'
JAN 1, 1989

A	B	C	D
E	F	G	H
I	J	K	L
M	N	O	P

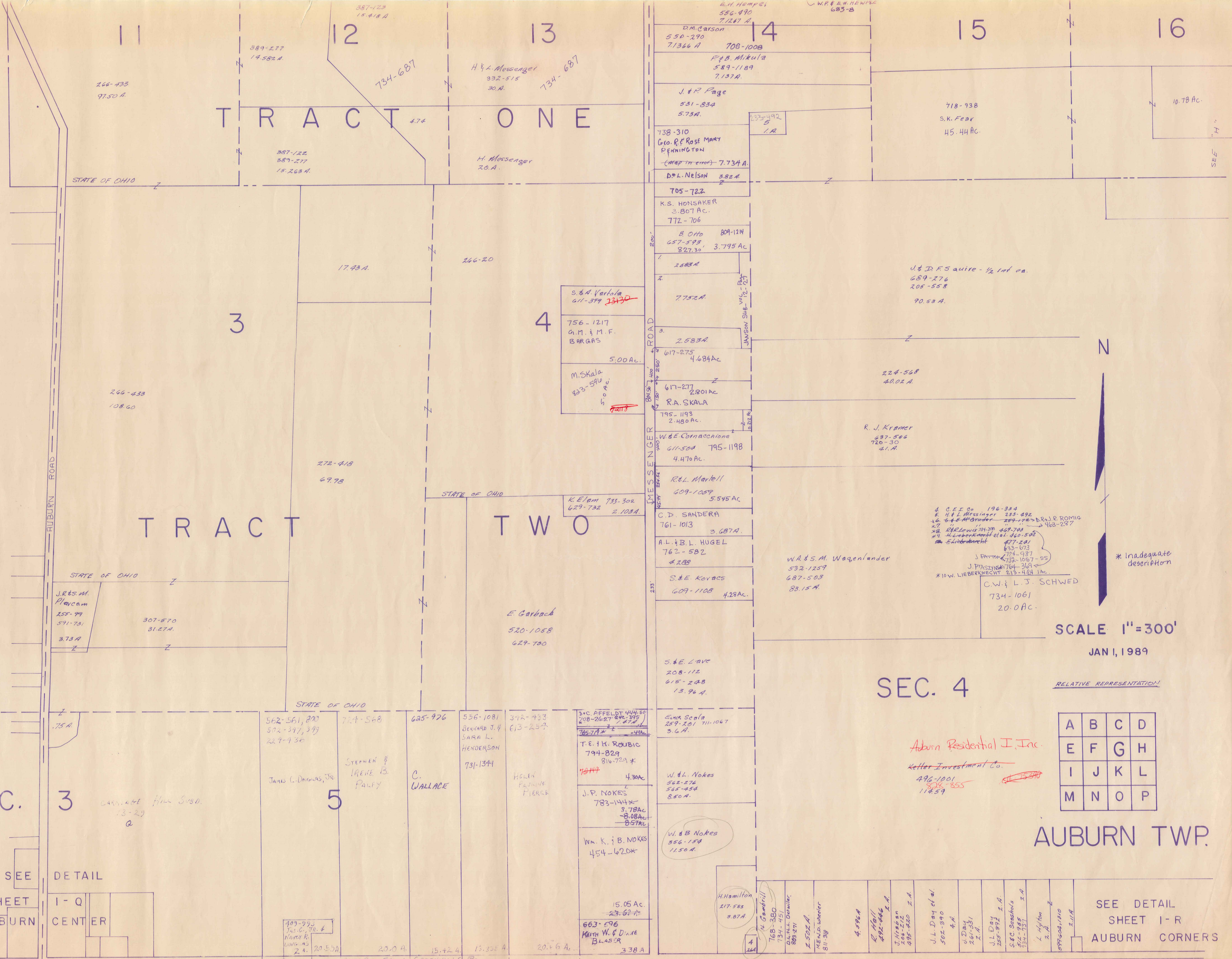
AUBURN TWP.

RELATIVE REPRESENTATION

- No.
1. R. Randolph 752-305 1.1 Ac.
 2. D.F. SHIEVER 737-1316 0.46 Ac.
 3. G.J. J. J. MATTER 736-143 .55 Ac.
 4. M.F.M. VANDEL 663-1233 1.2 Ac.
 5. B. Whitney 239-123 7.12 Ac.
 7. B.H. VAN DYKE 302-191 1.1 Ac.

SEE DETAIL OF
AUBURN CENTER

I Q



SEE
SHEET
AUBURN

DETAIL
I - Q
CENTER

A	B	C	D
E	F	G	H
I	J	K	L
M	N	O	P

AUBURN TWP.

SEE DETAIL
SHEET 1-R
AUBURN CORNERS

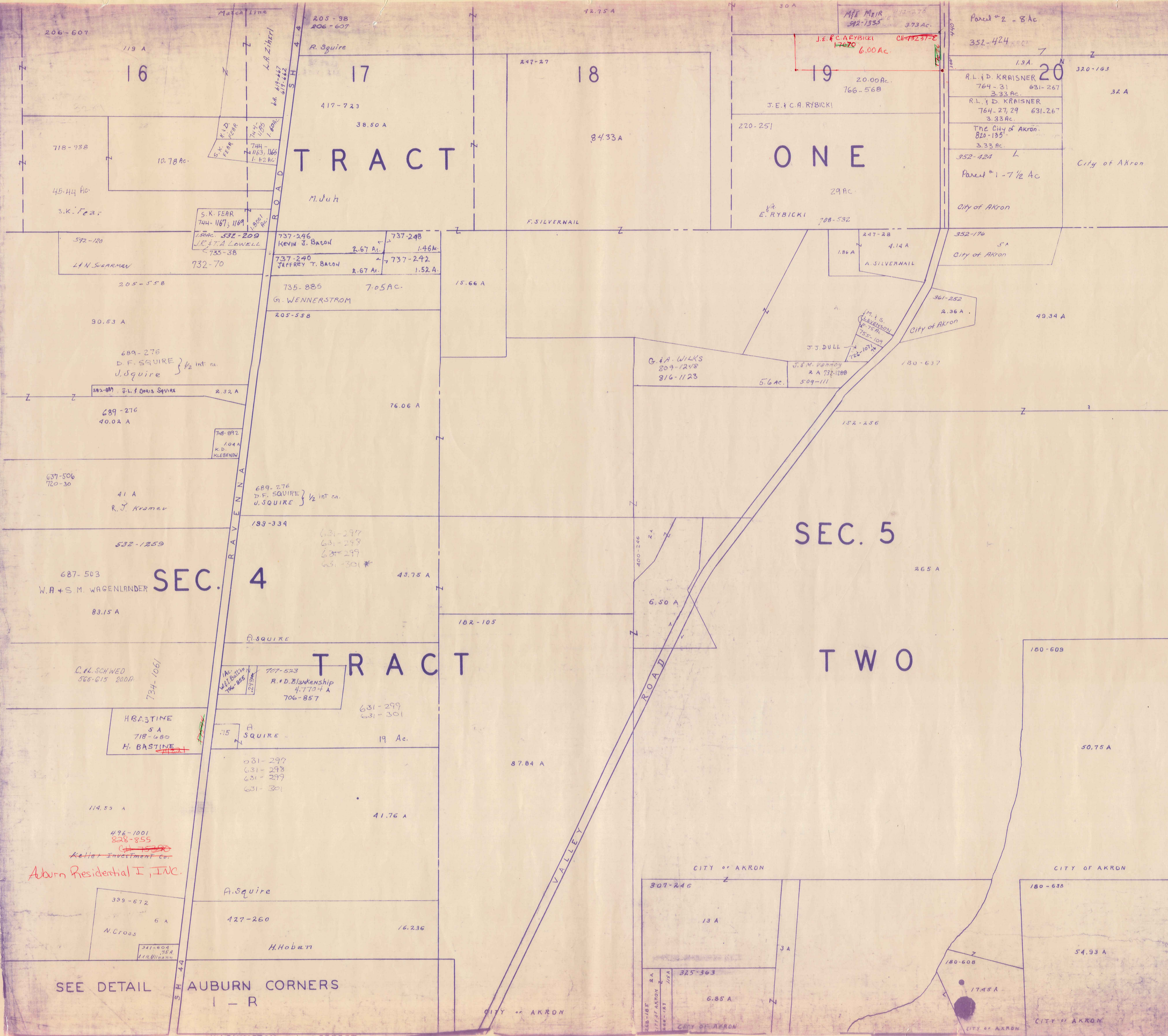
SEC. 4

SCALE 1"=300'
JAN 1, 1989

RELATIVE REPRESENTATION

Auburn Residential I, Inc.
Keller Investment Co.
496-1001
805-855
11459

Match Line
J. WIELAND S. ELWOOD W.P. 87
R. Dragomer 259-223 35.36 A.
N.E.P. Gastemire 501-599 70-737 A.
A.J. SAUNDERS 777-1302 21.64
H. E. BAKER 564-814 358-114 1 A.
G.S. Hastings 700-534 40.38 A.
A. Padejimas 220-386 6.25 A.
281-873 245-276 3.78 A.
251-306 5 A.
R.R. Baker 225-495 2 A.
C. Lewis 231-881
R. & R. Lewis 467-143
Match Line



TROY TOWNSHIP



SCALE 1" = 300'

A	B	C	D
E	F	G	H
I	J	K	L
M	N	O	P

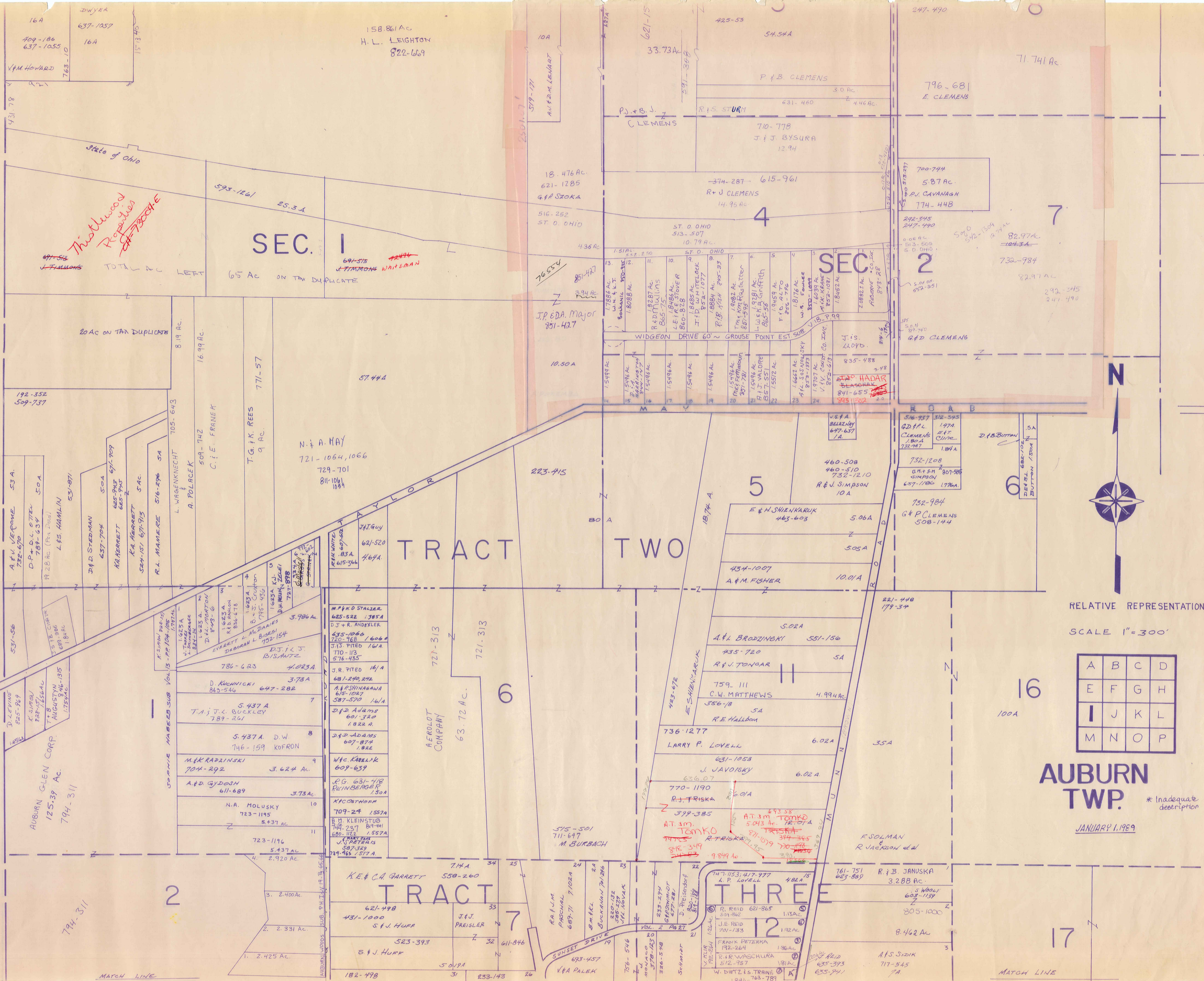
AUBURN TWP.

JANUARY 1, 1929
RELATIVE REPRESENTATION

* Inadequate description

SEE DETAIL AUBURN CORNERS 1 - R

BAINBRIDGE TOWNSHIP



Trustwood Properties of 7300 E

SEC. 1

SEC. 2

TRACT TWO

5

6

16

AUBURN TWP.

JANUARY 1, 1989

RELATIVE REPRESENTATION

SCALE 1"=300'

A	B	C	D
E	F	G	H
I	J	K	L
M	N	O	P

* Inadequate description

MATCH LINE

MATCH LINE

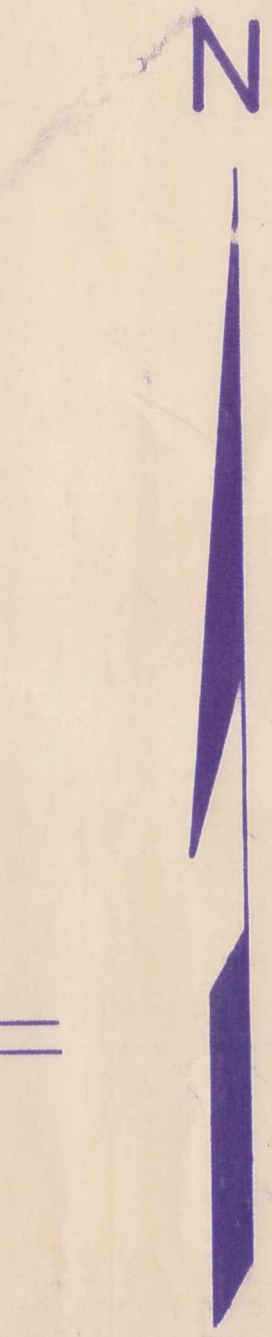
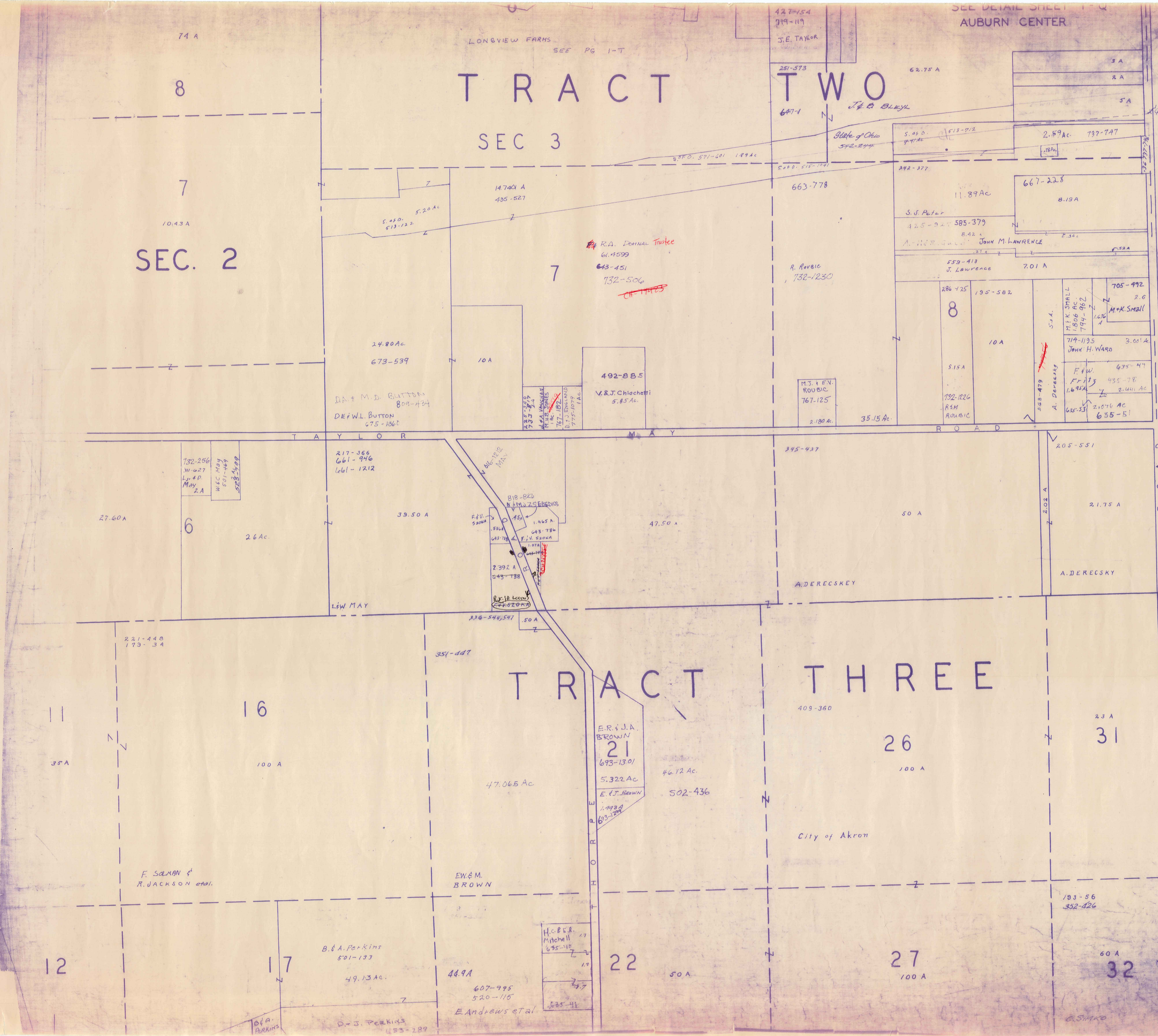
SEC. 2

TRACT TWO

SEC 3

TRACT THREE

AUBURN TWP



SCALE 1"=300'

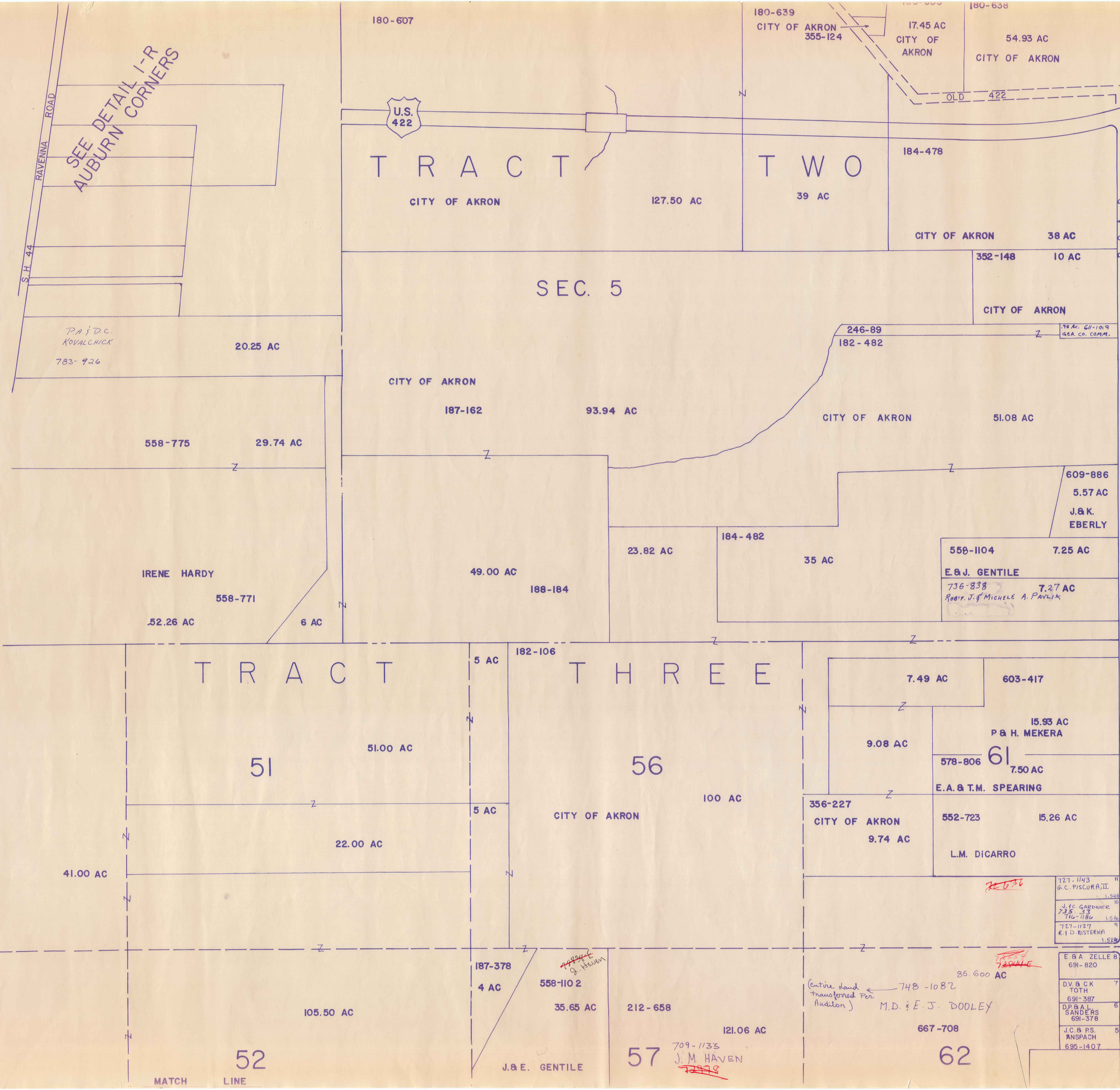
A	B	C	D
E	F	G	H
I	J	K	L
M	N	O	P

JANUARY 1, 1989

RELATIVE REPRESENTATION

* Inadequate description

MATCH LINE



SEE DETAIL I-R
AUBURN
CORNERS

PAID
KOVALCHICK
783-926

IRENE HARDY
558-771
52.26 AC

52
105.50 AC

TRACT TWO
CITY OF AKRON
127.50 AC

SEC. 5

CITY OF AKRON
187-162
93.94 AC

49.00 AC
188-184

TRACT THREE

51
51.00 AC

56
100 AC
CITY OF AKRON

187-378
4 AC
558-1102
35.65 AC
J. & E. GENTILE

57
121.06 AC
709-1135
J. M. HAVEN

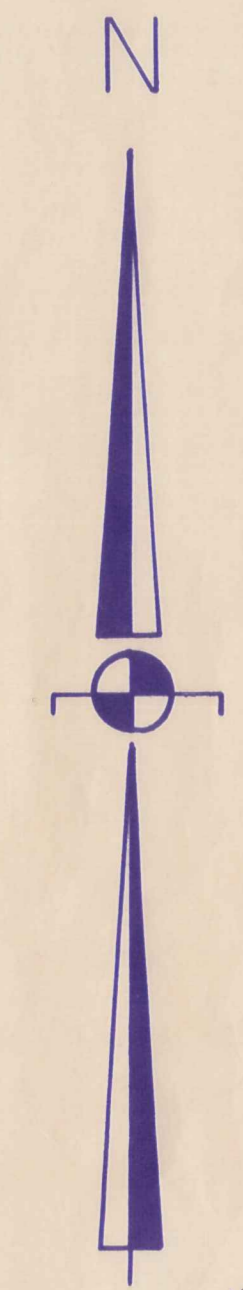
7.49 AC
603-417
15.93 AC
P & H. MEKERA
9.08 AC
578-806
7.50 AC
E.A. & T.M. SPEARING
356-227
CITY OF AKRON
9.74 AC
552-723
15.26 AC
L.M. DICARRO

62
667-708
25.600 AC
748-1082
M.D. & E.J. DOOLEY
709-1135
J. M. HAVEN

727-1143
G.C. PISCORRA, II
1.500
J. C. GARDNER
725-33
716-1180
1.500
727-1127
R. & D. WISTEKHA
1.500

E & A ZELLE B
691-820
D.V. & C.K. TOTH
691-387
D.P. & A.L. SANDERS
691-378
J.C. & P.S. ANSPACH
695-1407

TROY TOWNSHIP



*Inadequate Description

SCALE: 1" = 300'

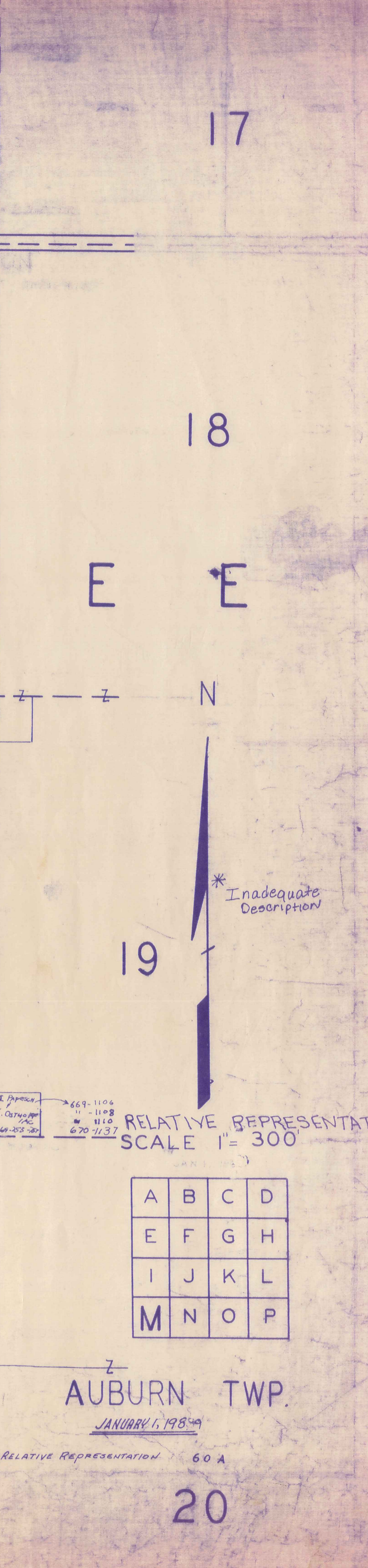
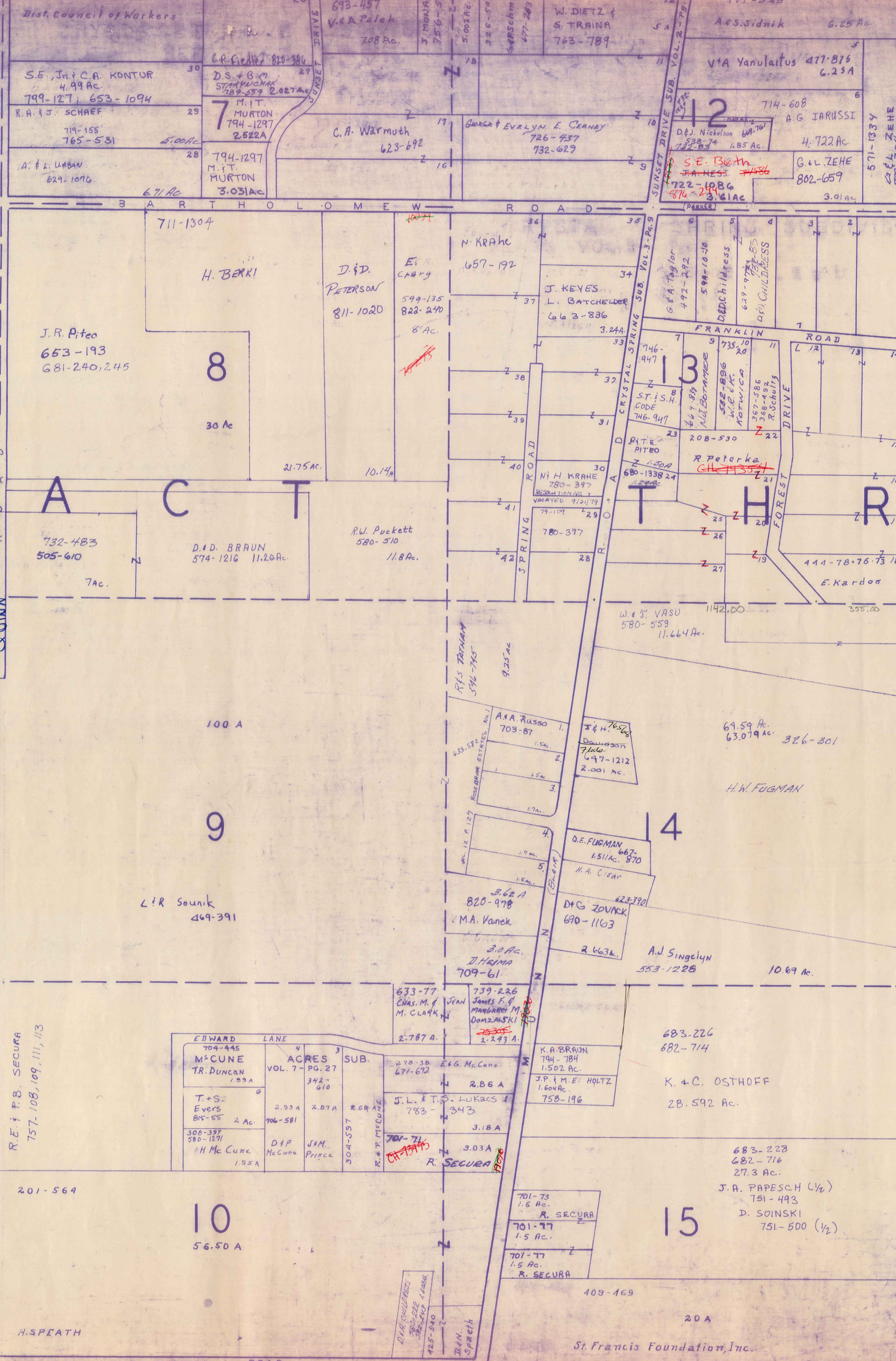
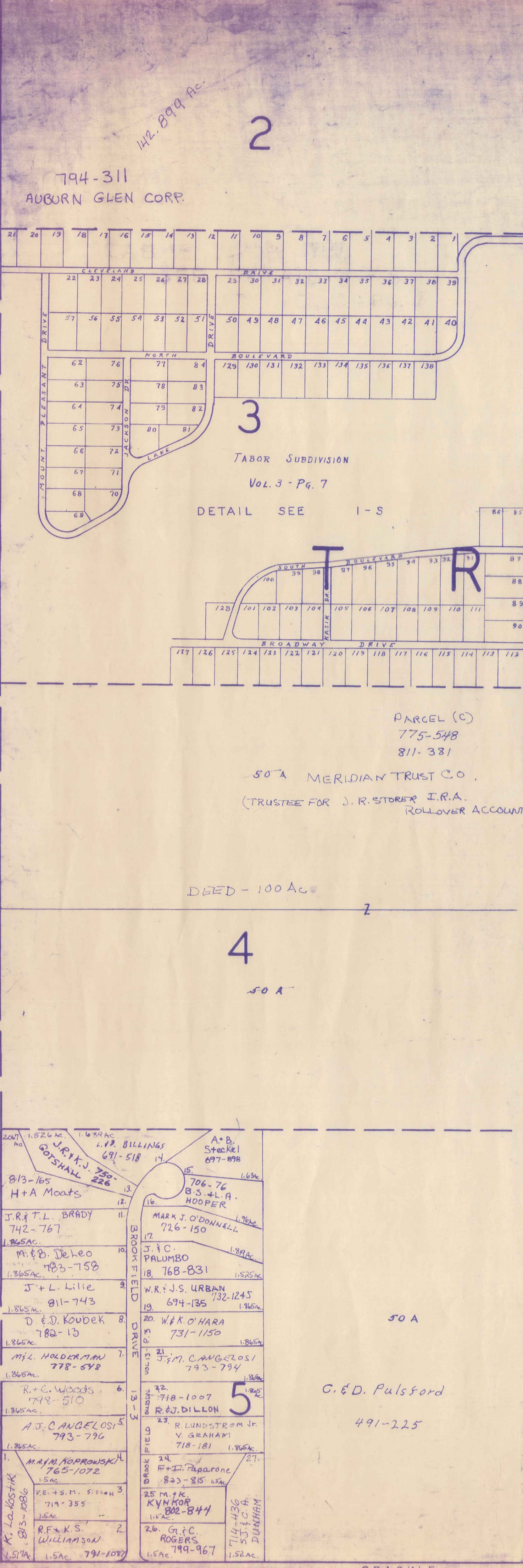
A	B	C	D
E	F	G	H
I	J	K	L
M	N	O	P

AUBURN TOWNSHIP
JANUARY 1, 1989

RELATIVE REPRESENTATION

THE TOWNSHIP IN VOL. 75, P. 86

B
A
I
N
B
R
I
D
G
E
T
O
W
N
S
H
I
P



2

3

4

5

8

9

10

12

13

14

15

17

18

19

20

PARCEL (C)
775-548
811-381

50 A MERIDIAN TRUST CO.
(TRUSTEE FOR J. R. STORER I.R.A.
ROLLOVER ACCOUNT

DEED - 100 AC.

50 A

C. & D. Pulsford
491-225

21.75 AC.

10.14 AC.

100 A

L.R. Souik
469-391

R.E. & P.B. SECURA
757-108, 109, 111, 113

EDWARD LANE	ACRES	SUB.
M'CUNE TR. DUNCAN	342.610	4
T. & S. Evers	2.93A	2.87A
300-397	2.0A	2.0A
H. Mc Cune	1.85A	
J.M. PRICE		
J.L. & T. LUKACS	3.43	
701-711		
R. SECURA	3.03A	

RELATIVE REPRESENTATION
SCALE 1" = 300'

A	B	C	D
E	F	G	H
I	J	K	L
M	N	O	P

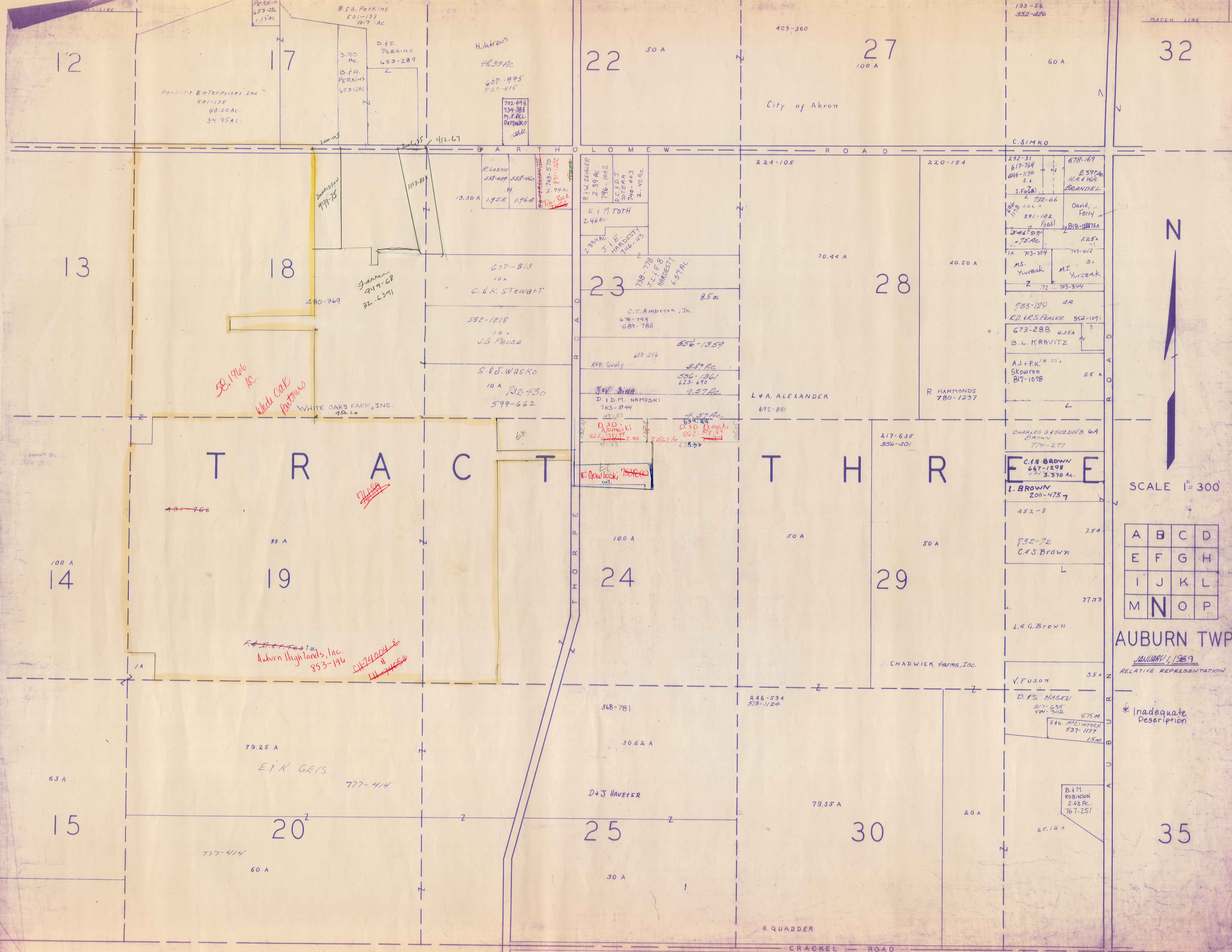
AUBURN TWP.

JANUARY 1, 1984

RELATIVE REPRESENTATION 60 A

* Inadequate Description

St. Francis Foundation, Inc.



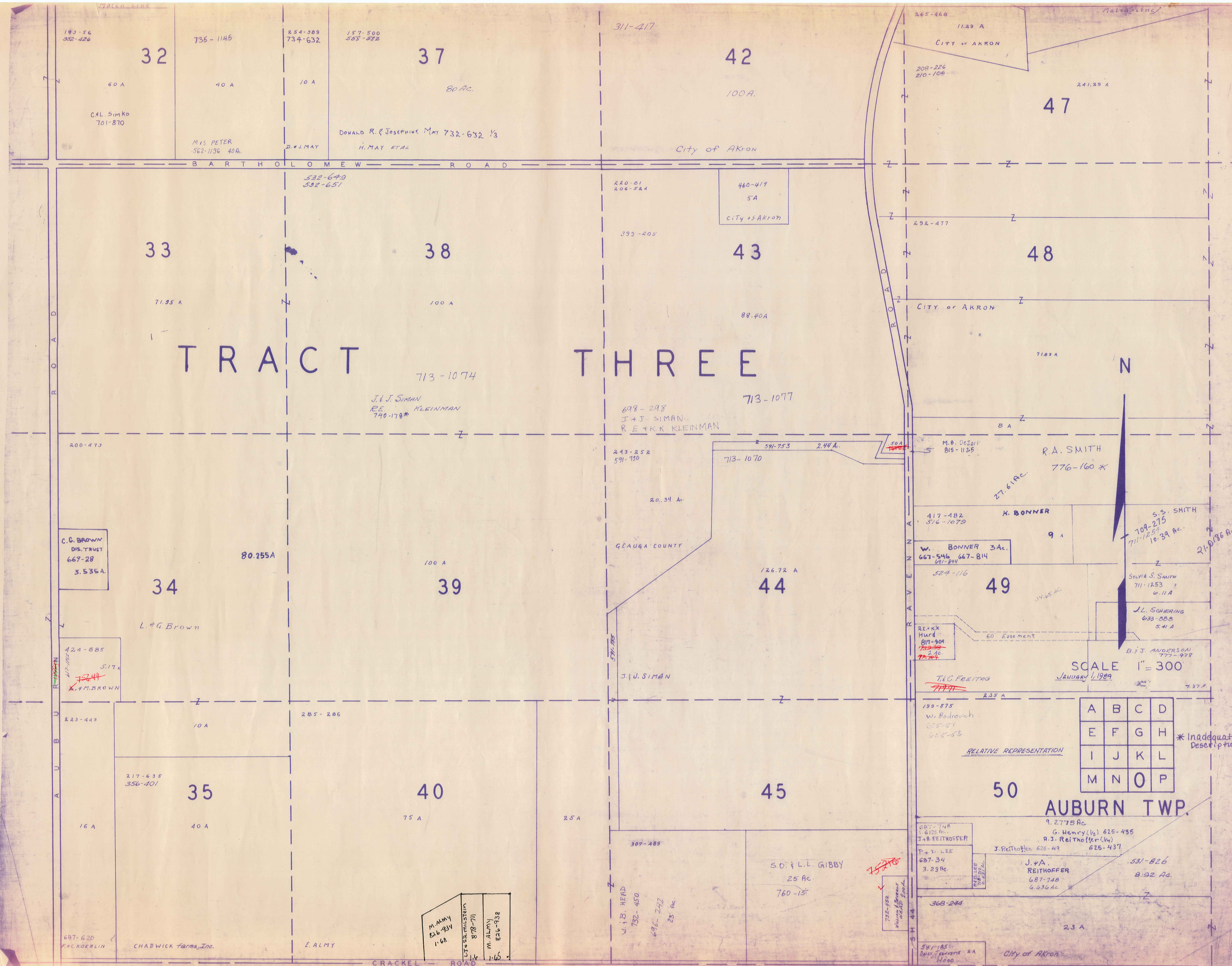
SCALE 1" = 300'

A	B	C	D
E	F	G	H
I	J	K	L
M	N	O	P

AUBURN TWP.

JANUARY 1, 1989
RELATIVE REPRESENTATION

* Inadequate Description



TRACT THREE



SCALE 1" = 300
JANUARY 1, 1989

A	B	C	D
E	F	G	H
I	J	K	L
M	N	O	P

* Inadequate Description

AUBURN TWP.

32
60 A
C.L. SIMKO
701-870

33
71.95 A

34
80.255A
L. & G. Brown

35
40 A
CHADWICK Farms, Inc.

36
10 A
E. ALMY

37
80 AC.
DONALD R. & JOSEPHINE MAY 732-632 1/3
H. MAY ETAL

38
100 A
J. & J. SIMAN
RE. KLEINMAN
740-178*

39
100 A
J. U. SIMAN

40
75 A
S.O. & L.L. GIBBY
25 Ac.
760-15

41
25 A
V.I.B. HEAD
732-450
646-242
25 Ac.

42
100 A
CITY OF AKRON

43
88.40A
CITY OF AKRON

44
126.72 A
GEAUGA COUNTY

45
25 A

46
20.34 A
R.A. SMITH
776-160 *

47
71.83 A
CITY OF AKRON

48
8 A
K. BONNER
9 A
W. BONNER 3A.
667-546 667-814
691-894
524-116
RE. K.K. Hurd
817-904
732-909
2 Ac.
732-744

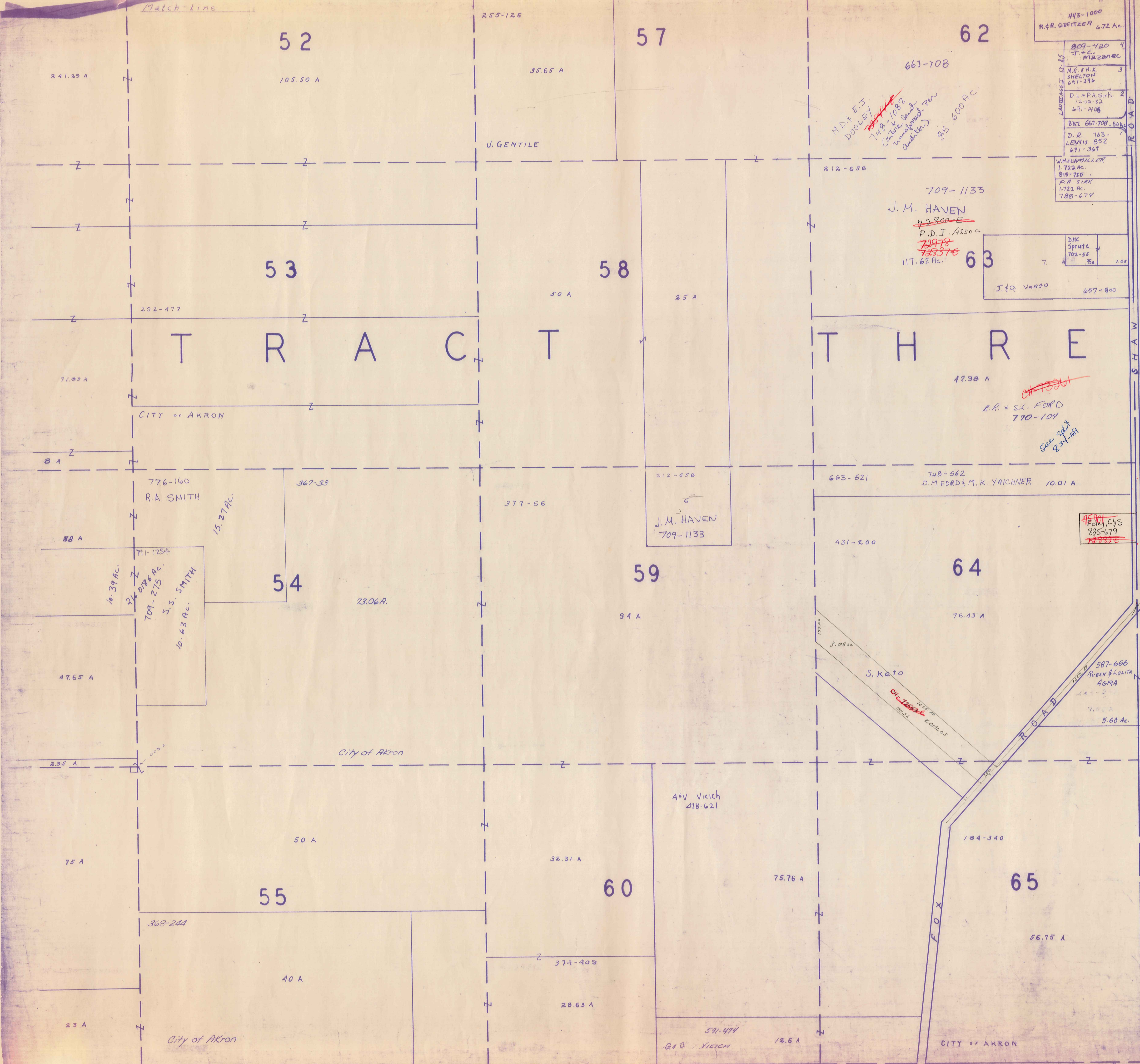
49
34.65 AC.
S.S. SMITH
709-275
711-1254
10.39 AC.
21.036 AC.
SYLVIA S. SMITH
711-1253
6.11 A
J.L. SCHERING
633-888
5.41 A
B.J. ANDERSON
773-928
7.27 A.

50
2.35 A
T.C. FEIBTAG
77471
199-575
W. Bodrovich
625-51
625-53
RELATIVE REPRESENTATION

51
9.2775 AC.
G. Henry (1/2) 625-435
R.J. Reithoffer (1/4)
J. Reithoffer 625-49
625-437
J. & A. REITHOFFER
687-748
6.636 AC.

52
2.3 A
CITY OF AKRON

M. ALMY
826-934
1.68
L.S. & S. MILSTEIN
878-711
1.4
M. ALMY
826-938
1.6



Match Line

Match Line

T R A C T T H R E

T O W N S H I P T R O Y



SCALE 1" = 300'

JANUARY 1, 1969

A	B	C	D
E	F	G	H
I	J	K	L
M	N	O	P

* Inadequate Description

AUBURN TWP.

RELATIVE REPRESENTATION

445-1000
R.F.R. GREITZER 6.72 Ac.

809-420 4
J.C. MARZANO
M.E. P.A.K. SHELTON
691-596
D.L. + P.A. SIBB
1202 82
691-1108
B.M. 667-708. 50 A
D.R. 763-LEWIS 852
671-367
WILLIAM MILLER
1.722 Ac.
815-720
R.R. SINK
1.722 Ac.
788-674

D.M. Sprate
702-55
98a
1.05
J.R. VARGO 687-800

DEPT
POLICE, CYS
835-679
733376

M.D. E.J. DOOLEY
748-1082
County Court
Washington Twp
(Auditor)
85.600 Ac.

709-1133
J.M. HAVEN
~~42800-E~~
P.D.I. Assoc
~~79978~~
~~733376~~
117.62 Ac.

17.98 A
R.R. + S.L. FORD
790-104
See plat
8-21-1961

748-562
D.M. FORD & M.K. YAICHNER 10.01 A

S. Kato
5.08 Ac.
CITY OF AKRON
CONULAS

587-666
RUBEN & LONITA
4694
5.60 Ac.

A.V. Viech
418-621

591-474
G.A.O. Viech 12.6 A

CITY OF AKRON

AUBURN TP.

[CENTER]

TRACT 2 SECTION 3



RELATIVE REPRESENTATION

JANUARY 1, 1909

SCALE 1 in. = 25 ch. = 165 ft.

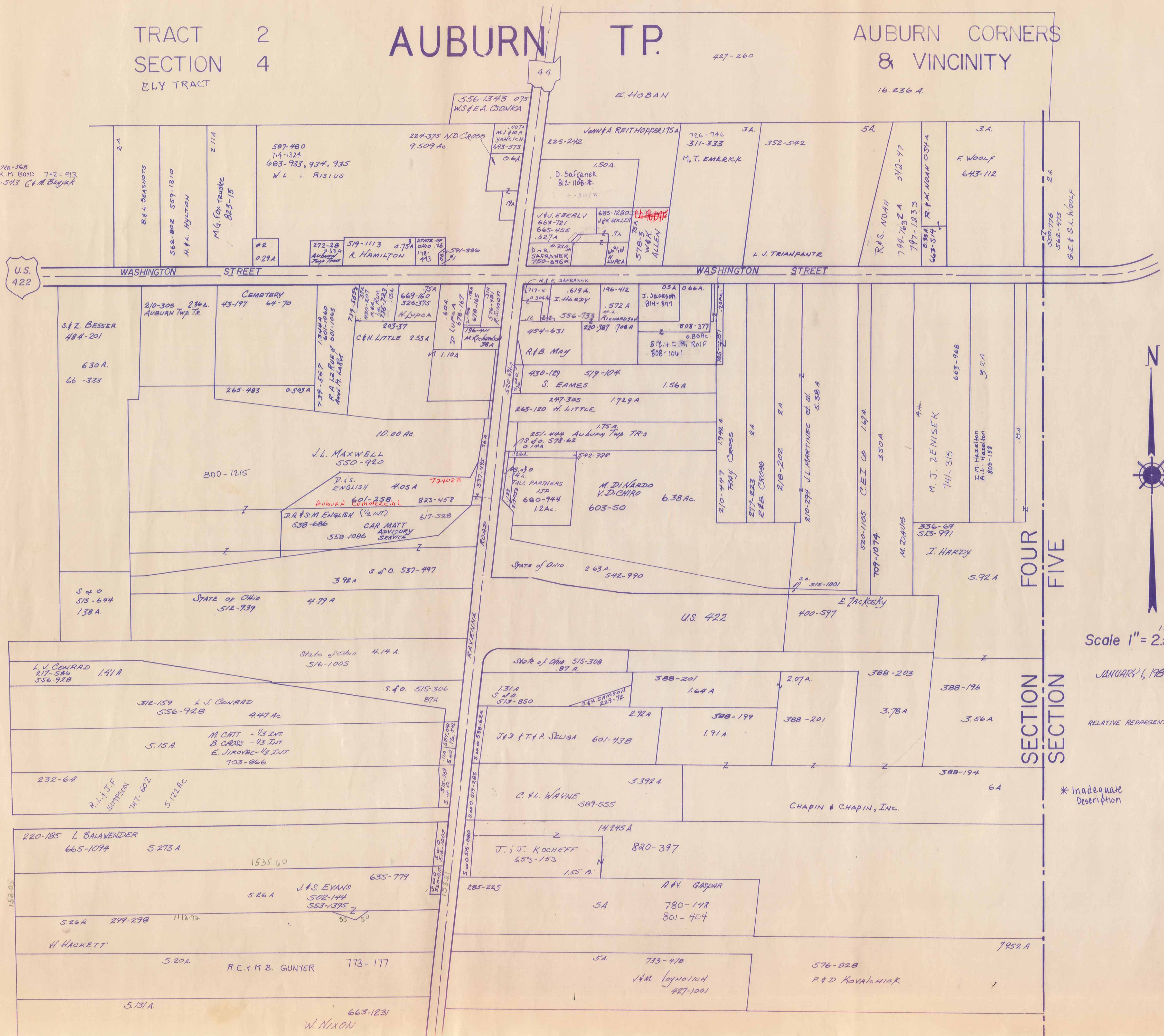
* Inadequate Description

TRACT 2
SECTION 4
ELY TRACT

AUBURN TP.

AUBURN CORNERS
& VICINITY

*1 718-568
*2 J.G. & K.M. BOYD 742-913
*3 373-543 C.A.M. BENYAK



Scale 1" = 2.5 ch. = 165 ft.

JANUARY 1, 1989

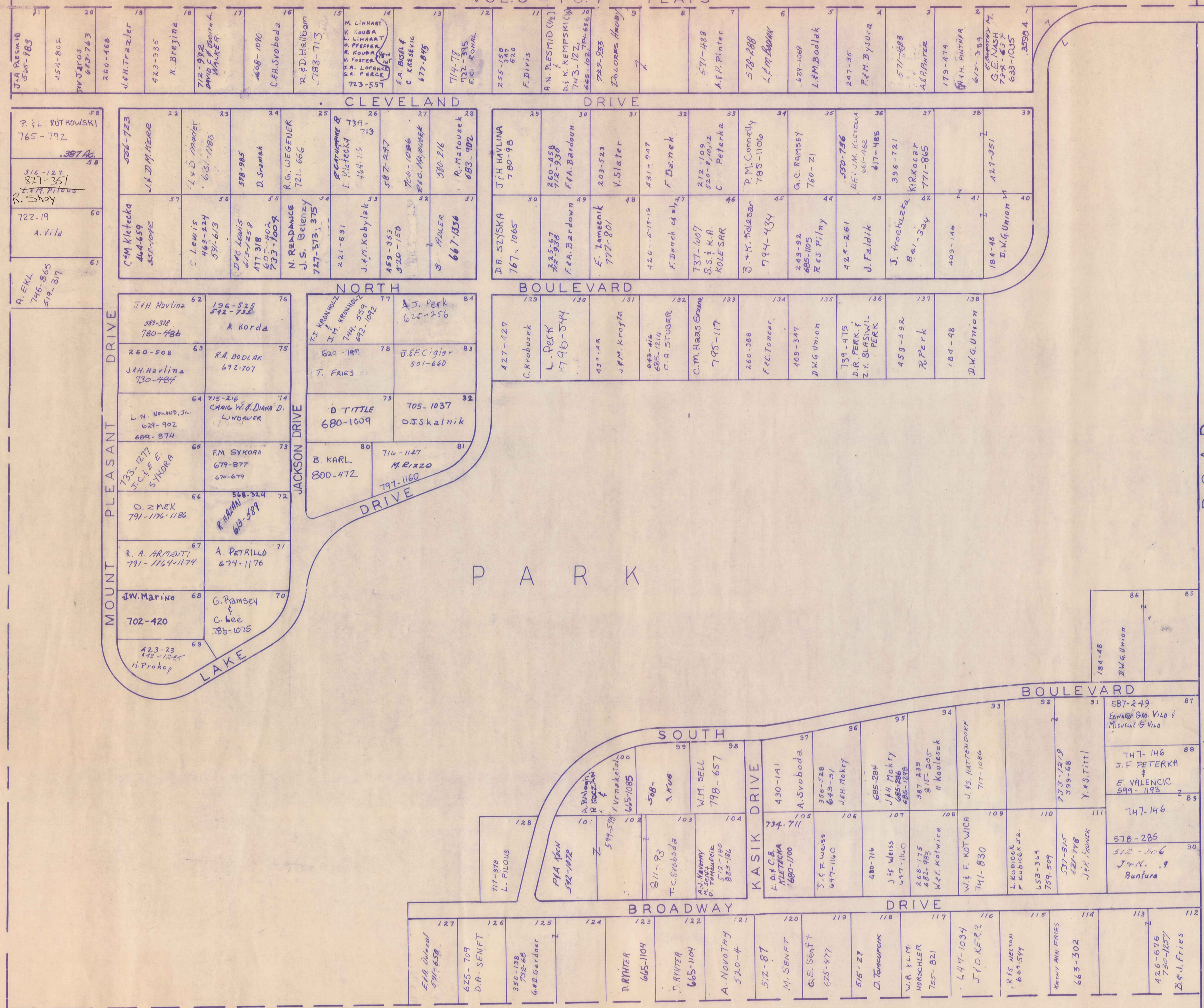
RELATIVE REPRESENTATION

* Inadequate Description

SECTION FOUR
SECTION FIVE

TABOR SUBDIVISION

VOL. 3 - PG. 7 PLATS



QUINN ROAD

N

SCALE 1" = 100'

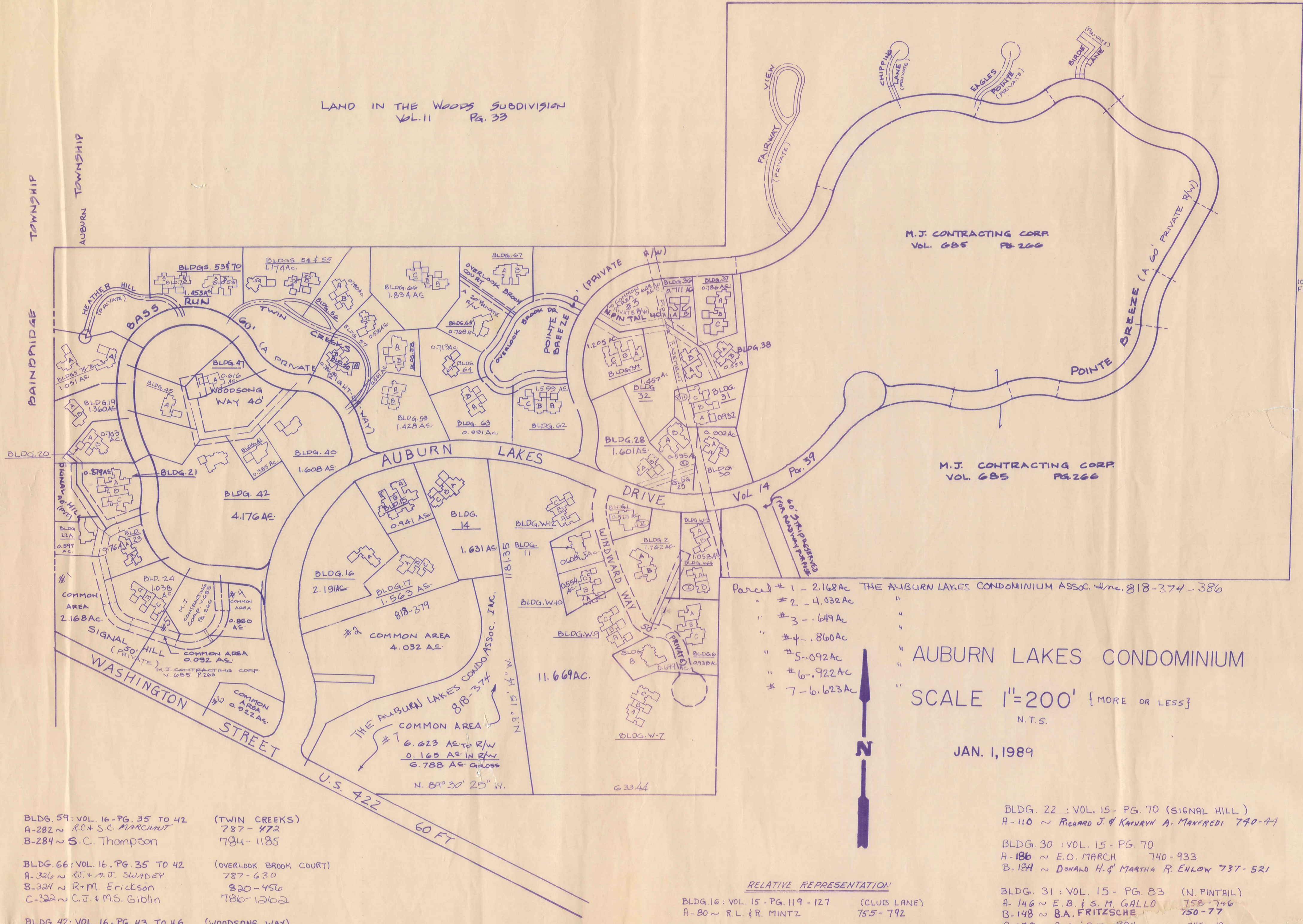
JANUARY 1, 1989
AUBURN TWP.

RELATIVE REPRESENTATION

* Inadequate Description

IS

LAND IN THE WOODS SUBDIVISION VOL. 11 Pg. 53



- BLDG. 47: VOL. 17, PG. 8 TO 16 (WOODSONG WAY)
A-226 ~ G. Bianchini + N. Bean 818-672
B-202 ~ M. Penziato 814-744
- BLDG. 53: VOL. 17, PG. 8 TO 16 (TWIN CREEKS DRIVE)
A-250 ~ J+B. Collier 817-560
B-252 ~ H+H. Dunlop 813-919
- BLDG. 70: VOL. 17, PG. 8 TO 16 (HEATHER HILL)
A-210 ~ D+C. Sczima 815-1095
B-208 ~ V+P. Scocos 813-697
- BLDG. 2: VOL. 17, PG. 47 TO 58 (WINDWARD WAY)
A-64 ~ P+A. Erickenden 819-69
B-62 ~ J. Kinzig 820-200
- BLDG. 75: VOL. 17, PG. 47 TO 58 (HEATHER HILL)
A-224 ~ R+E. Blake 818-119
- BLDG. 65: VOL. 16, PG. 123 TO 126 (OVERLOOK BROOK DRIVE)
65-312 ~ J+J. Hallack 803-927
- BLDG. 54: VOL. 16, PG. 148 TO 155 (TWIN CREEKS DRIVE)
54-262 ~ F. Adler 809-284
- BLDG. 55: VOL. 16, PG. 148 TO 155 (TWIN CREEKS DRIVE)
A-264 ~ G+S. Villers 820-363
B- ~ J+M. Walton 809-1034
- BLDG. 64: VOL. 16, PG. 148 TO 155 (OVERLOOK BROOK DRIVE)
64-310 ~ M+S. Duffy 808-136
- W-1: VOL. 15 - PG. 1
A-66 ~ M.F.N. LAVIN 718-161
- W-2:
A-64 ~
B-62 ~
C-60 ~
- W-3: VOL. 14 - PG. 110 - 115
A-54 ~ A. D'Otavio 815-1040
B-52 ~ W. J. RINI 708-427
- W-4: VOL. 14 - PG. 110 - 115
A-50 ~ D. DOLCH 718-1127
B-48 ~ D. G. RIETHMILLER 705-649
- W-5:
A-58 ~
B-56 ~
- W-6: VOL. 15 - PG. 1
A-46 ~ D. J. MATZ 718-203
B-44 ~ WAYNE L. RISIUS 735-1292
C-42 ~ W+T. Masters 809-405
- W-7: VOL. 14 - PG. 72
A-40 ~ M.A. BERG + S. LYNN 823-944
B-38 ~ H. EPPRECHT 700-1300
C-36 ~ J.N. & C. HOLYLAND 714-720
- W-8: VOL. 14 - PG. 130 - 136
A-34 ~ R.F.S. MERIAN 715-102
B-32 ~
- W-9: VOL. 14, PG. 72 (WINDWARD WAY)
A-30 ~ B.S. JERFSK 713-468
B-28 ~ W.H. THOMPSON 770-24
C-26 ~ CAROL L. MAUTER 733-1031
- W-10: VOL. 14 - PG. 110 - 115
A-24 ~ J.A. + S. M. KALISER 783-221
B-22 ~ K.+D. WERNER 707-1185
C-20 ~ M. J. WIELAND 717-745; 743-263
- W-11: VOL. 14 - PG. 130 - 136
A-18 ~ M.F.L. VITALE 716-1917
B-16 ~
- W-12: VOL. 14 - PG. 72
A-14 ~ A.-J. SCULLI 701-737
B-12 ~ D. K. ROBY 799-1181
C-10 ~ STEPHEN M. CHARLOTTE T. QVA 727-160
- BLDG. 21: SIGNAL HILL / VOL. 15 - PG. 21
A-100 ~ R+B. Bemley 809-1223
B-102 ~ K.D. DINGWELL 823-1079
C-104 ~ W. L. RISIUS 757-150
- BLDG. 20: VOL. 14 - PG. 141 - 144
A-90 ~ MARK + KANCY MILLS 728-681
B-98 ~ R.G. ROBERTS 716-97
- BLDG. 34: VOL. 15 - PG. 1
A-100 ~ G+M. HANTLEY 793-647
B-102 ~ V+B. Weber 822-476
C-104 ~ RAYMOND J. + CAROL J. SIPP 736-979
- UNIT 15: VOL. 15, PG. 17 (COVE COURT)
A-74 ~ T.D. + D.R. CLARK 765-634
B-70 ~ ROBERT J. KIEHLER 739-750
C-78 ~ LEADWORKS, INC. 729-151

- BLDG. 59: VOL. 16 - PG. 35 TO 42 (TWIN CREEKS)
A-282 ~ R+C. MARCHANT 787-472
B-284 ~ S.C. Thompson 784-1185
- BLDG. 66: VOL. 16 - PG. 35 TO 42 (OVERLOOK BROOK COURT)
A-326 ~ R+M. SWANEY 787-630
B-322 ~ R.M. Erickson 820-450
C-322 ~ C.J. + M.S. Giblin 786-1262
- BLDG. 42: VOL. 16 - PG. 43 TO 46 (WOODSONG WAY)
42-192 ~ E. Visconsi 807-578
- BLDG. 57: VOL. 16, PG. 72 TO 76 (TWIN CREEKS)
57- ~ R.K. Swik 794-955
- BLDG. 50: VOL. 16 - PG. 82 TO 92 (TWIN CREEKS)
A-240 ~ L.+R. Crouse 797-765
B-242 ~ P.+E. Chapple 808-59
- BLDG. 56: VOL. 16 - PG. 82 TO 92 (TWIN CREEKS)
A-270 ~ P.+F. Keleher 798-1031
B-270 ~ E.A. Leonetti 797-758
- BLDG. 63: VOL. 16 - PG. 82 TO 92 (OVERLOOK BROOK DRIVE)
A-304 ~ P.L. FETOW 796-130
B-302 ~ C.R. Zachem 796-1056

- BLDG. 62: VOL. 16 - PG. 8 TO 11 (OVERLOOK BROOK DRIVE)
A-278 ~ B.J. DWYER + L.C. MULLEN 773-665
B-300 ~ W.S. + F.A. M. KOVAL 774-635
C-302 ~ X.F.C. WILSON 773-446
- BLDG. 38: VOL. 16 - PG. 19 TO 23 (N. PINTAIL)
A-180 ~ W.N. + J.M. Schwaiger 778-1182
B-182 ~ H.+H. GORSTEIN 789-397
- BLDG. 24: VOL. 16 - PG. 24 TO 34 (SIGNAL HILL)
A-180 ~ R.J. KIEHLER 801-1289
B-118 ~ R.A. GRIFFIN 782-2810
C-120 ~ J. SMITH 817-747

- RELATIVE REPRESENTATION
- BLDG. 16: VOL. 15 - PG. 119 - 127 (CLUB LANE)
A-80 ~ R.L. + R. MINTZ 755-792
 - BLDG. 36: VOL. 15 - PG. 119 - 127 (N. PINTAIL)
A-170 ~ D.H. + L.W. MATHEWS 756-779
B-172 ~ E.V. GORDON 759-1162
 - BLDG. 37: VOL. 15 - PG. 143 - 146 (NORTH PINTAIL)
A-174 ~ W.H. + H.P. Thompson 778-1204
B-176 ~ R. Post (Trustee) 814-1054
C-178 ~ A.S. + B.M. GILL, JR. 772-963
 - BLDG. 58: VOL. 15 - PG. 149 - 153 (TWIN CREEKS)
A-278 ~ D.J. JONES 770-1
B-280 ~ S.H. + R.L. SILVER 714-1079

- BLDG. 22: VOL. 15 - PG. 70 (SIGNAL HILL)
A-110 ~ RICHARD J. + KATHRYN A. MANFREDI 740-44
- BLDG. 30: VOL. 15 - PG. 70
A-186 ~ E.O. MARCH 740-933
B-184 ~ DONALD H. + MARTHA R. ENLOW 737-521
- BLDG. 31: VOL. 15 - PG. 83 (N. PINTAIL)
A-146 ~ E.B. + S.M. GALLO 758-746
B-148 ~ B.A. FRITZSCHE 750-77
C-150 ~ G.L. + R.M. PAY 745-1340
- BLDG. 23: VOL. 15 - PG. 91 (SIGNAL HILL)
A-112 ~ T.D. EVANS 749-865
B-114 ~ D.L. + M.C. BOOHER 760-4
- BLDG. 32: VOL. 15 - PG. 91
A-152 ~ D.C. + R.G. SKINNER 751-889
B-154 ~ W.K. OLIVIER 751-554

- UNIT 28 VOL. 15-56
A-138 ~ DOUGLAS + BAMBIE CHARD 730-452
B-140 ~ HOWARD B. + SHIRLEY D. MARX 733-493
- UNIT 41 VOL. 15 PG. 60-67
41 ROBERT + GERALDINE M. VERAAR 734-1265
- UNIT 29: VOL. 15 - PG. 60 (S. PINTAIL)
A-142 ~ JOEL J. + RELMA L. LITMAN 736-927
B-144 ~ T.W. + B.L. HUNTER 763-211
- UNIT 17: VOL. 15 - PG. 91 (CLUB LANE)
A-84 ~ T.G. KUHNLE 757-1026
B-86 ~ S.N. THOMPSON 771-867
C-88 ~ H.T. FAY 748-810

* Inadequate Description